



DEMOCRACY LEAGUES

*Expanding civic opportunities and building
a community of engaged problem-solvers*



A COMMUNITY OF ENGAGED-PROBLEM SOLVERS

The magic of deliberation



What if the public was not a risk to be managed, but a resource to be tapped?

What if you could work across the city with neighbors from different perspectives to resolve your most intractable community problems?

Using models of deliberation, including the globally celebrated citizens' assembly, Unify America helps communities embed public problem-solving frameworks and expand civic engagement opportunities. So, what's the benefit? Deliberative opportunities can enhance public trust for institutions and neighbors, increase public participation, and build creative, impactful solutions to your toughest public issues.



ENHANCE PUBLIC TRUST



INCREASE PARTICIPATION



SOLVE TOUGH ISSUES

Here's the secret sauce in deliberative models:

When people come together to deliberate on a topic, they behave differently—in a good way. They're able to listen across differences, overcome biases, change their minds, and work together to solve complex problems. In our deliberation models, the community members are:

- **Invited** to apply with broad, inclusive recruitment
- **Randomly selected** and **representative** of the community
- **Compensated** and given needed **accommodations** to participate
- Empowered with enough **time to digest** complexity and trade-offs
- Connected to **impact** and know their work matters (a government or organization that can take action is actively asking for their input)
- Provided **robust information and diverse perspectives** on the issue
- Guided by **skilled facilitators**

Join us in building a stronger, more engaged civil society at UnifyAmerica.org





A COMMUNITY OF ENGAGED-PROBLEM SOLVERS

Local Democracy Leagues



So, how can you embed the magic of deliberation into your community—sustainably? Meet the Democracy League, a networked hub for civic problem-solving. Run locally by paid staff, and supported by national best practices and technology, the League drives healthy civic engagement and brings residents and leaders together to address public issues collaboratively. At a high level, here's how it works:



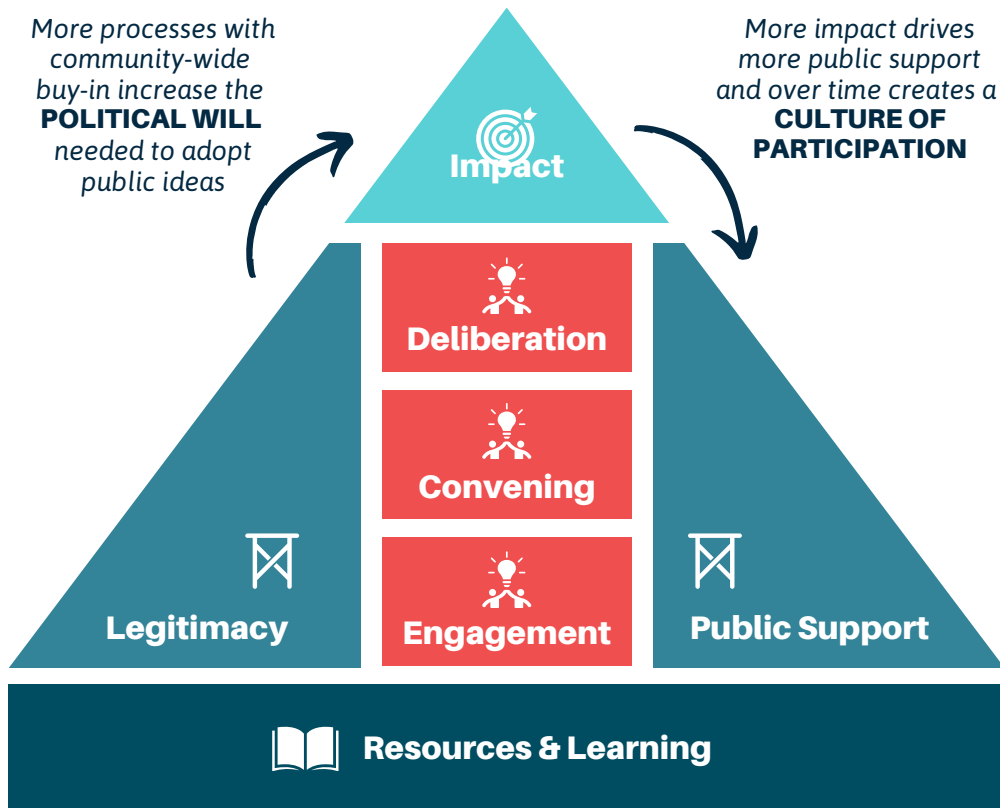
Join us in building a stronger, more engaged civil society at UnifyAmerica.org





Collaborative Civic Ecosystem

A Democracy League lives within a larger ecosystem. Here are the ingredients to create a thriving local culture of participation and public problem-solving:



CIVIC IMPACT

The ecosystem must drive towards clear and measurable impact from collaborative community decision-making. The result? Residents feel a sense of belonging and see the power they have to shape their shared community.



A FOUNDATION OF RESOURCES & LEARNING

Sector Partnerships: Learning from and using best practices that have been tested by others in the field to build a menu of options for the community

Library of Resources: Ever-expanding tools, technology, frameworks, and examples to learn from from Unify and its network of other cities

Practitioners Network: Support, training, and networking for people in current positions who could benefit from using the skills of engagement, convening, and deliberation to enhance their current work and goals



COLLABORATIVE CIVIC TOOLS

The center of the ecosystem are tools to address public issues collaboratively, including:

- **Deliberation:** Public decision-making processes that are accessible, inclusive, data-rich, transparent, and well-facilitated where residents get access to information, sufficient time to learn and weigh trade-offs, compensation, and needed resources so all can have the opportunity to join
- **Convening:** Sortition and relationship-based grassroots hosting to build random, representative groups of residents and ensure all stakeholders in a community are represented
- **Engagement:** Outreach, information sharing, input gathering, and feedback loops from residents across all populations



PUBLIC SUPPORT & LEGITIMACY

The ecosystem needs markers of support and legitimacy like:

- **Public Education:** Ongoing learning/sharing opportunities and reliable media coverage
- **Resident Networks:** Peer networks of residents that advocate, build skills, help uncover issues, hold processes accountable, and support implementation next steps
- **Government Support:** Officials who actively support public decision-making and deliberative engagement
- **Champion Leaders:** A cross-sector, cross-partisan group who are champions of deliberative infrastructure
- **Funding Sources:** Mechanisms and commitments to fund ongoing public assemblies