

# Community Partnerships to promote Health Equity

70<sup>th</sup> All-America City Awards & Conference  
June 21, 2019



The Colorado Health Foundation™



Healthy Places focused on supporting communities' efforts to improve their **Neighborhood and Built Environment** in order to increase opportunities for safe, physical activity...



...we updated Healthy Places to also help support community efforts to address barriers to health that are **related** to Neighborhood and Built Environment.



Four points of technical assistance to assist communities from **Planning** through **Implementation**.



Christopher Smith [casmith@coloradohealth.org](mailto:casmith@coloradohealth.org)



The Colorado Health Foundation™

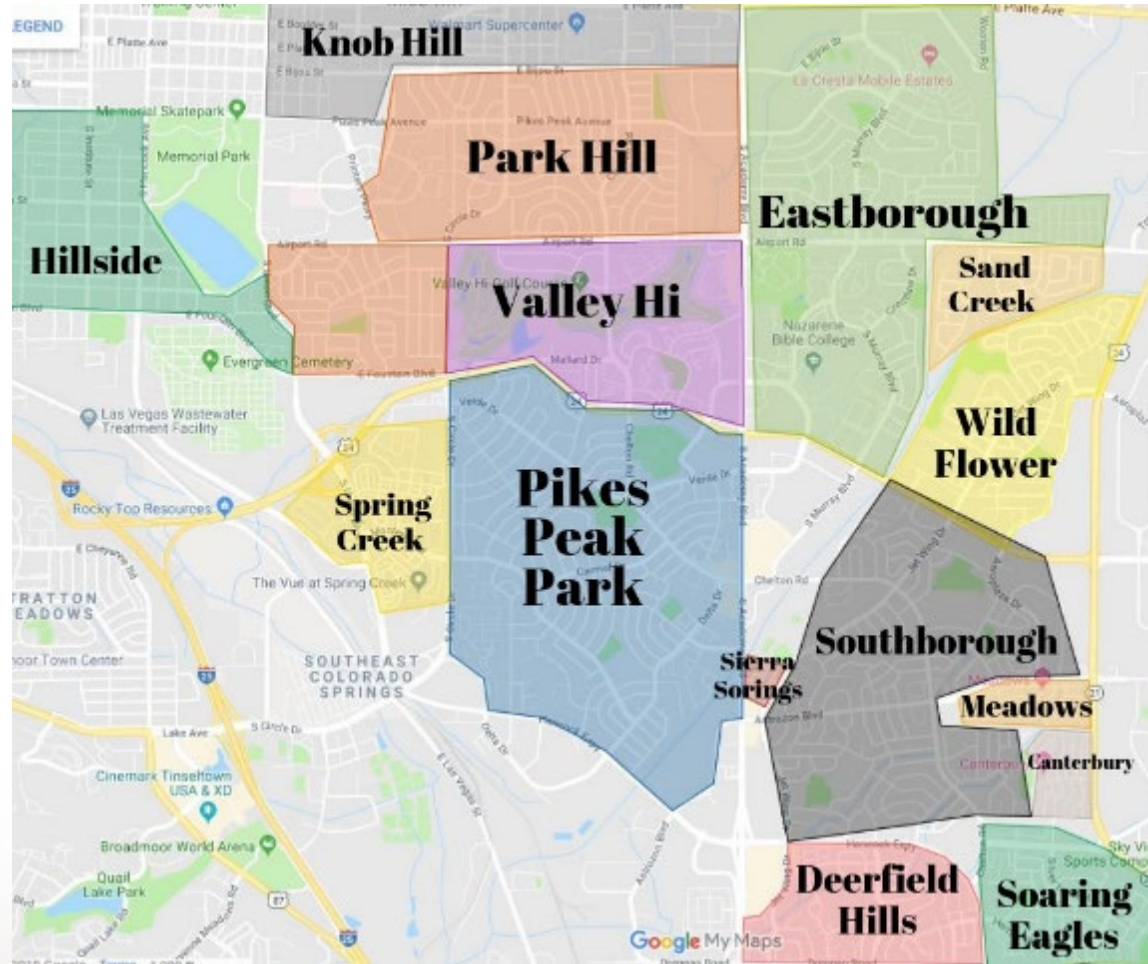
# Healthy Places Southeast Colorado Springs



# Colorado Springs



# Southeast Colorado Springs





# Southeast Colorado Springs Colorado

January 7–12, 2018



# Recommendations

## Recommendations Matrix

	Projects	Priority	Responsibility/funding
<b>Social connectivity</b>			
Community hub(s)	Pop-up concepts for underused sites	Low	City and NGO funding
	Mobile hub	Medium	City and NGO funding
	Community hub concept development	Low	City
Community advocacy	Community development corporation	High	City
	Leadership development and training	High	CDC
Communication	Coordinated communications integration	High	CDC
<b>Safety and accessibility</b>			
Transit improvements	Install ADA-compliant bus stops	High	City/transit agency
	Integrate transit hubs with land use	Low	City
	Promulgate land use policy to promote mixed-use infill at transit hubs	Medium	City
First- and last-mile trail connectivity	Improve sidewalk connectivity to transit stops	Low	City
	Coordinate Lyft/Uber or other alternatives with city and agencies	Medium	City/transit agency
Academy Boulevard streetscape improvements	Establish implementation priorities (safety at crossings)	High	City/CDOT
	Define and implement temporary bicycle interventions	Medium	City/CDOT
	Implement recommended streetscape design	Low	City
Community intersection improvements	Improve pedestrian and bicycle safety at major intersections	High	City
Pedestrian/bicycle trail connections	Carry out ADA audit of the community	Low	City
	Improve sidewalk connectivity	High	City/county/GOCO

# Recommendations

Recommendations Matrix

	Projects	Priority	Responsibility/funding
<b>Social connectivity</b>			
Community hub(s)	Pop-up concepts for underused sites	Low	City and NGO funding
	Mobile hub	Low	City and NGO funding
	Community hub concept development	Low	City
Community advocacy	Community development corporation	High	City
	Leadership development and training	High	CDC
Communication	Coordinated communications integration	High	CDC
<b>Safety and accessibility</b>			
Transit improvements	Install ADA-compliant bus stops	High	City/transit agency
	Integrate transit hubs with land use	Low	City
	Promulgate land use policy to promote mixed-use infill at transit hubs	Low	City
First- and last-mile trail connectivity	Improve sidewalk connectivity to transit stops	Low	City
	Coordinate Lyft/Uber or other alternatives with city and agencies	Low	City/transit agency
Academy Boulevard streetscape improvements	Establish implementation priorities (safety at crossings)	High	City/CDOT
	Define and implement temporary bicycle interventions	Low	City/CDOT
	Implement recommended streetscape design	Low	City
Community intersection improvements	Improve pedestrian and bicycle safety at major intersections	High	City
Pedestrian/bicycle trail	Carry out ADA audit of the community	Low	City

### DONATE

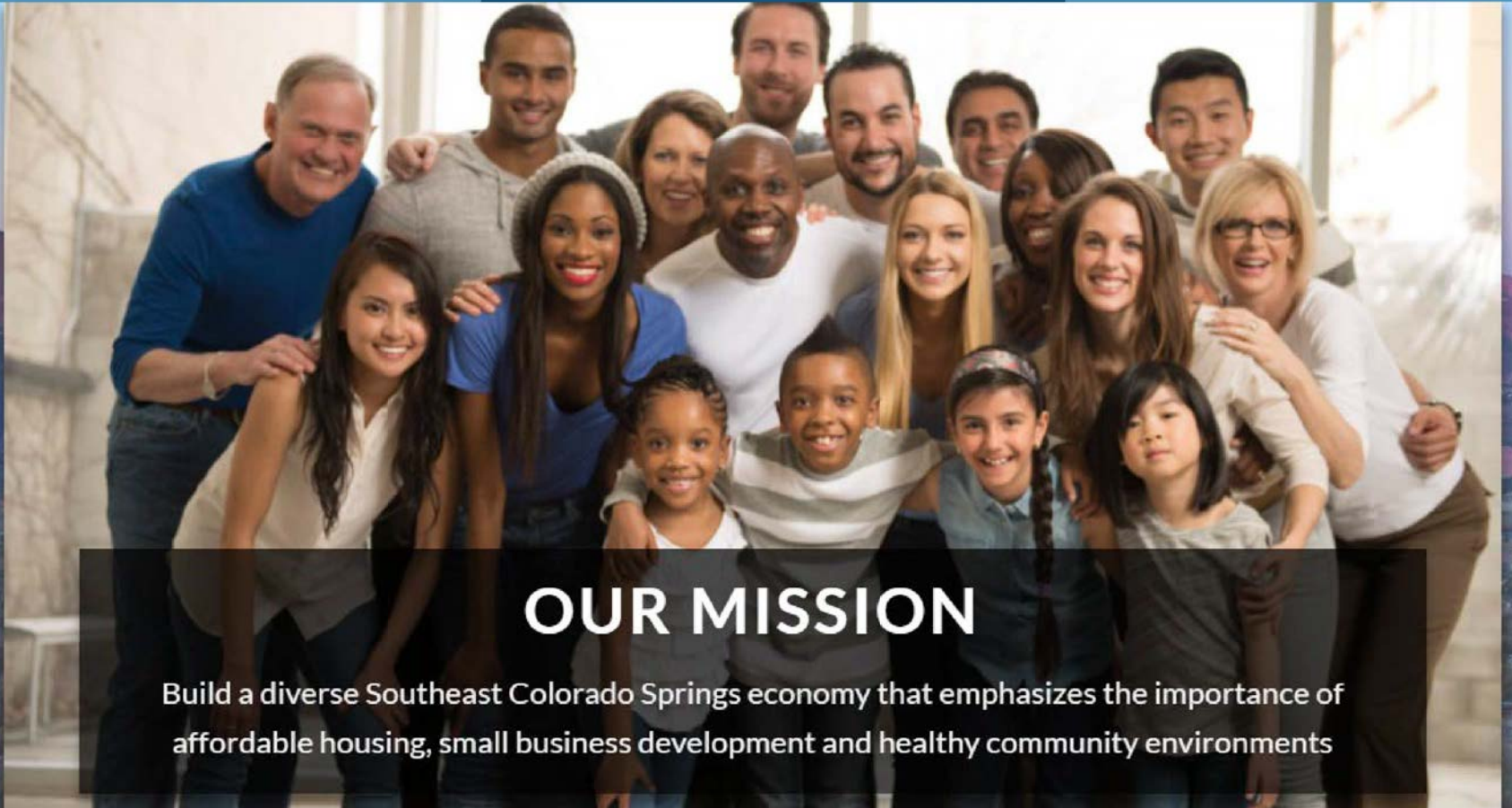
Our work in economic development is supported by grants and gifts.  
You can help support us by donating. [Donate Now!](#)

### FRESH START INVESTMENT PROGRAM

Get help from the Fresh Start Investment Program.  
[Click here](#) for more information.

### WE ARE HIRING!

Full Time: [Project Manager](#)  
Part Time: [Executive Assistant](#)



## OUR MISSION

Build a diverse Southeast Colorado Springs economy that emphasizes the importance of affordable housing, small business development and healthy community environments





## Progress to date

- City of Colorado Springs Investment
  - Engaged
  - Hosting meetings in community
  - CDC board representation
- Property owner involvement
- Successful events – community turning out

# Questions?

Ben Anderson

[benanderson@solidrockcdc.com](mailto:benanderson@solidrockcdc.com)

719-393-7625

Aubrey Day

[aubreyday@elpasoco.com](mailto:aubreyday@elpasoco.com)

719-578-3275

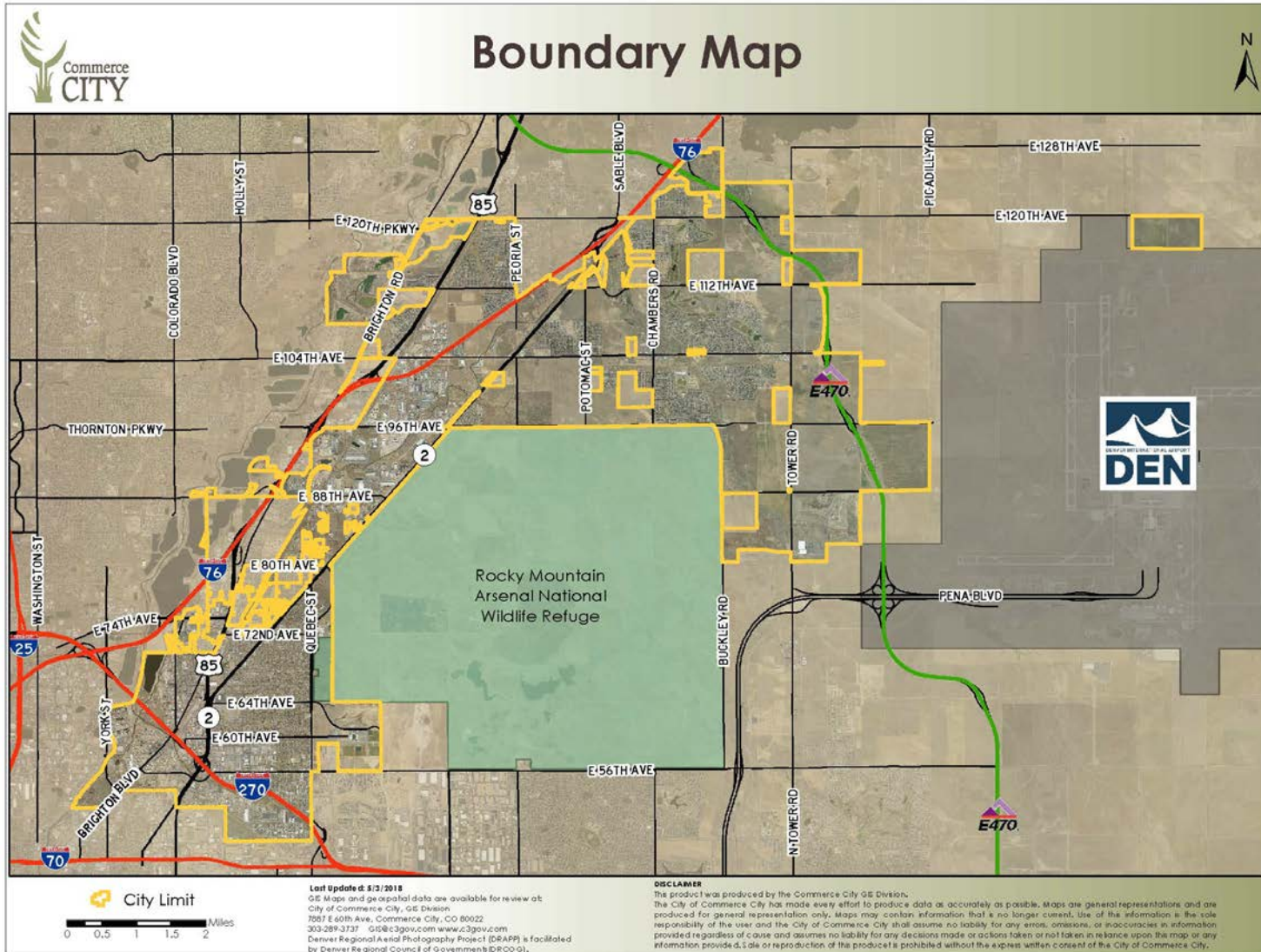


# Community Partnerships to Promote Health Equity

June 21, 2019



# Commerce City at a Glance

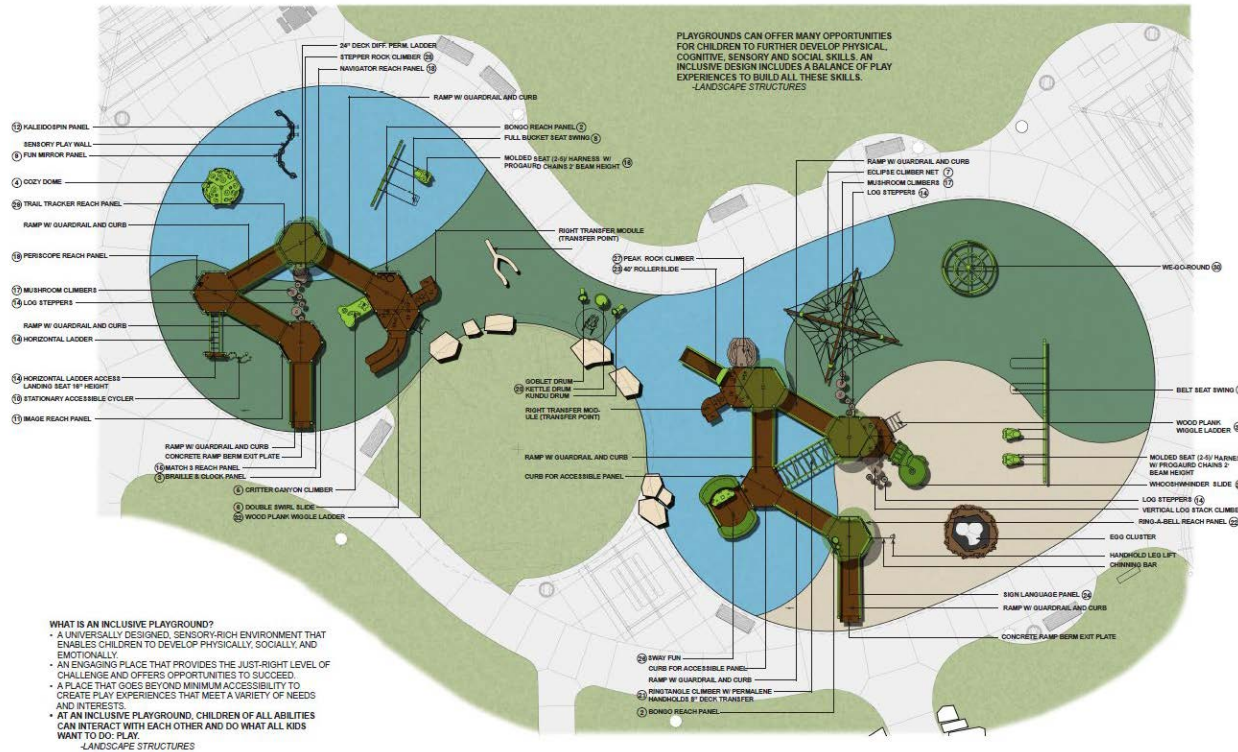


# New Park & Recreation Facilities

---



# Inclusive Play Structure



VETERANS MEMORIAL PARK  
INCLUSIVE PLAYGROUND CONCEPT PLAN

DHM DESIGN  
JANUARY 2019



# Community Partnerships promoting health equity

---

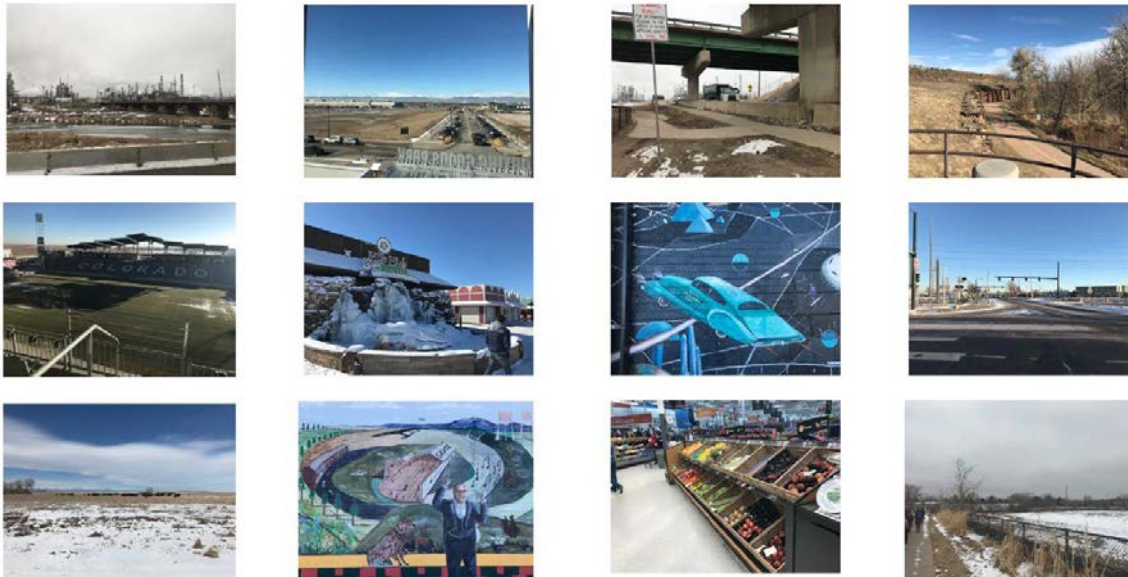
- Thriving Communities, Live Well Commerce City, HEAL
- GOCO – Generation Wild
- Healthy Places Initiative
  - Urban Land Institute (ULI)
  - Cultivando
  - Latino Engagement Taskforce



# Community Partnerships promoting health equity

## Urban Land Institute (ULI)

---



 **Urban Land Institute**  
Advisory Services Program

**Commerce City, CO**  
**February 11-16, 2018**



# Community Partnerships promoting health equity Urban Land Institute (ULI)

## Thank you to Everyone Else...!/Gracias a Todos!

Alberto Rodriguez \* Chris Cramer \* Maria D'Andrea \* Roger Tinklenberg \* Cristina Ruiz \* Rosa Nidia Hernandez \* Brandon Braud \* Steve Timms \* Dennis Moon \* Troy Smith \* Teresa Estrada \* Isela Lozano \* Jennifer Woods \* Kevin Vincel \* Margot Gonzalez \* Tracy Jones \* Maria Cervantes \* Kate Kramer \* Elizabeth Vitela \* Maria Ruiz \* Beth Nobles \* Alan Alvarez \* Sandra Dominguez \* Randy Juarez \* David Pocs \* Maria Zubia \* Jeanie Nuanes King \* Dona Tomy Garcia \* Ed Hanson \* Melinda Maes \* Mark Sink \* Lucy Molina \* Elva Medina \* Cristina Melchor \* Michelle Claymore \* Cheryl Steinberg \* Erin Mooney \* Dave Hoskins \* Al Fransisco \* Sheila Lynch \* Maritza Gutierrez \* Paul Sandos \* Scott Weber \* Sheryl Carstons \* Guadalupe Villalobos \* Maria Zubiata \* Reyna Soria \* Craig Fitchett \* Mike Gibson \* Michelle Halstead \* Tonatiuh Rocha \* Maria Rodriguez \* Chris Viscardi \* Sandy Carruthers \* Laura Alvarez \* Deyanira Zavala \* Jose Guardiola Sr \* Maria Gonzalez \* Jennifer Prather \* Cynthia Souders \* Patrick Wolach \* Anita Mercado \* Adan Aguirre \* Brendan Binns \* Shannon McDowell \* Chad Rathburn \* Cipo De los Santos \* Jorge De los Santos \* Janet Keesey \* Lisha Burnett \* Julia Hurdelbring \* Rosalva Pichardo \* Teresa Rojas \* Maria Aguilar \* Susan Carabajal \* Lisa Nordholt \* Marisol Pichardo \* Rosa Castellanos \* Dale Mingleton \* Tim Moore \* Benito Pichardo \* Jose L. Zubiata \* Denise Kaza

Commerce City, CO  
February 11-16, 2018



# Cultivando – Latino Engagement Taskforce

---



# Community Partnerships promoting health equity

---







# MONTBELLO FRESHLO INITIATIVE

# MONTBELLO FRESHLO INITIATIVE

## ▶ PHASE 1 PLANNING

- ▶ Conducted Market Scan
  - ▶ Dialogued with over 2500 people
- ▶ Launched a Communication Platform
  - ▶ FreshMob Activations in 8 locations
  - ▶ Piloted Pop-up Farmer's Market
- ▶ Developed "*My Dinner in Montbello*"  
Concept
  - ▶ Branded Montbello Alive!

# MONTBELLO FRESHLO INITIATIVE

## WHAT WE HEARD

- ▶ *The neighborhood lacks healthy food options and infrastructure that would allow general walkability.*
- ▶ *Very little community meeting or gathering space to support an active and engaging sense of community.*
- ▶ *Limited availability of fresh food options contributes to high rates of diabetes and obesity.*
- ▶ *Larger chain grocery stores regard neighborhood demographics as a barrier to entry into the market.*

# MONTBELLO FRESHLO INITIATIVE

## WHAT WE HEARD cont'd

- ▶ *The neighborhood lacks connectivity to schools, transit, food shopping, or even for simple exercise.*
- ▶ *RTD has consolidated bus routes, resulting in less service within the neighborhood.*

# MONTBELLO FRESHLO INITIATIVE

## INITIATIVE ELEMENTS

Goal 1. Build a cultural hub that will unify the diverse cultural perspectives of the community. Includes:

- ❖ Medium-sized fresh food market.
- ❖ Fresh Food Farmacy
- ❖ Cultural Hub - Performance and artist exhibition space.
- ❖ Small and large meeting/gathering places.
- ❖ Community kitchen as an incubator for micro-enterprise development.
- ❖ Affordable housing units.

# MONTBELLO FRESHLO INITIATIVE

## INITIATIVE ELEMENTS

Goal 2. Expand the existing Montbello Urban Farm as a means of increasing local production and distribution of fresh and healthy food.

- ❖ Expanded in-ground growing space to increase the yield of fresh produce during the growing season.
- ❖ Build a commercial greenhouse to expand food production year-round.
- ❖ Implement a comprehensive food access system to improve health among low-income residents.

# MONTBELLO FRESHLO INITIATIVE

## INITIATIVE ELEMENTS

Goal 3. Create a walkable “healthy living loop” that connects community gardens, school gardens, other natural outdoor spaces, and the Cultural Hub.

- ▶ Enhance activated school and community gardens and mini farms as points along the walkable loop.
- ▶ Work with Denver Public Works department to improve sidewalks and street crossings.
- ▶ Create signage and include art installations that reflect the culture of the community.

# MONTBELLO FRESHLO INITIATIVE




## INITIATIVE ELEMENTS

### Goal 4.

- ▶ Publish a bimonthly, bilingual newspaper – the MUSE – and distribute door-to-door and online.
- ▶ Sponsor annual MONTBELLO ALIVE! Feastival and 5K Run
- ▶ Provide interpretation at every community meeting hosted by MOC.
- ▶ Canvas the neighborhood bi-annually to ascertain community concerns.

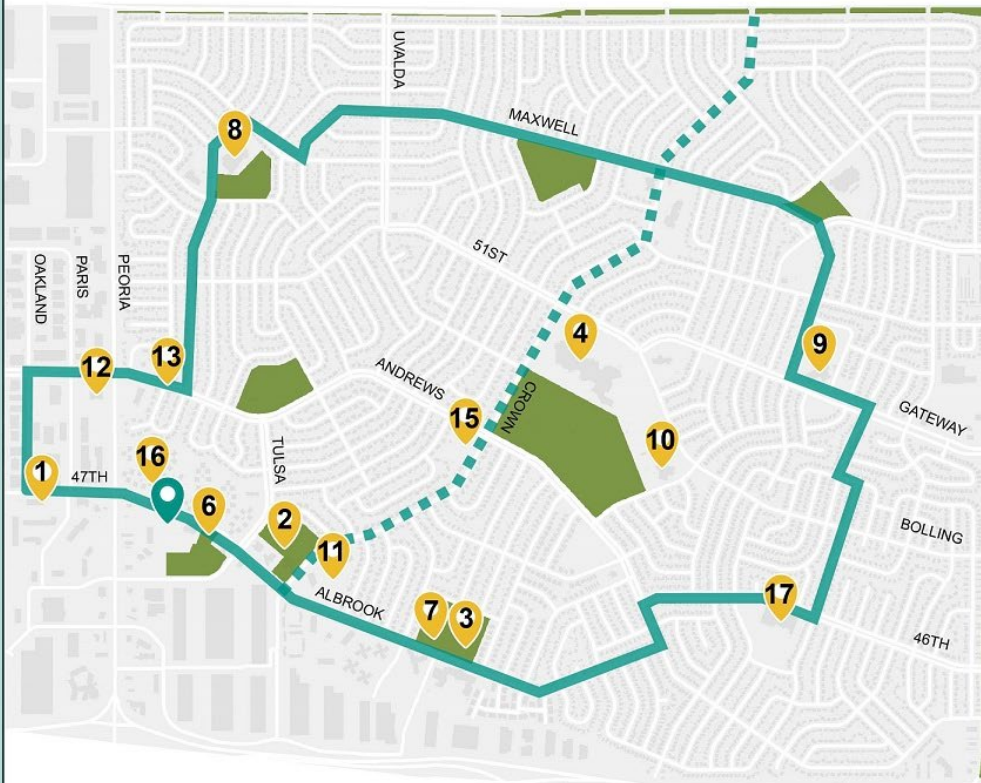


# Montbello FreshLo Walkable Loop

-  FreshLo Partner Projects
-  FreshLo Cultural Hub
-  Walkable Loop
-  Greenway

## Partners:

1. Academy 360
2. Colorado Changemakers Collective (CCC)
3. beWell
4. DCIS Montbello
5. District 11 - Office of Councilwoman Stacy Gilmore\*
6. Environmental Learning for Kids
7. Families Against Violent Acts
8. John H. Amesse Elementary
9. Marie L. Greenwood Elementary/ Each One Teach One
10. Maxwell Elementary
11. McGlone Elementary
12. Monarch Montessori
13. Montbello 2020
14. Montbello Recreation Center\*
15. Montbello Urban Farm
16. Mujer, Fuerza y Sentimiento
17. Oakland Elementary
18. Denver Department of Public Health and Environment\*



**MONTBELLO**  
ORGANIZING COMMITTEE

# MONTBELLO FRESHLO INITIATIVE

## What Will Be Better ?

Healthier residents at all ages – decreased obesity, diabetes, high blood pressure, etc.

All residents have access to fresh, locally-grown food.

Better neighborhood connectivity to schools, transit, food shopping, or even for simple exercise.

Artists at all ages will have venues for their art right in the community.

New jobs right in the community.